

# *Commercial Space in Grayling's Newest & Tallest Building*

102 E Michigan Avenue, Grayling, Michigan 49738



## COMMERCIAL SPACE FOR LEASE

This is your chance to establish a flagship presence in Grayling's tallest and most modern mixed-use development. Offering up to 3,947 SF of white-box commercial space, this ground-floor suite sits directly beneath 40 brand-new contemporary apartments, providing a built-in community of residents and strong day-to-day activity.

The space is ideal for a restaurant, boutique retailer, café, wellness user, or destination-oriented business looking for a fresh, modern setting. Build-to-suit options allow you to tailor the space to your exact brand and operational needs.

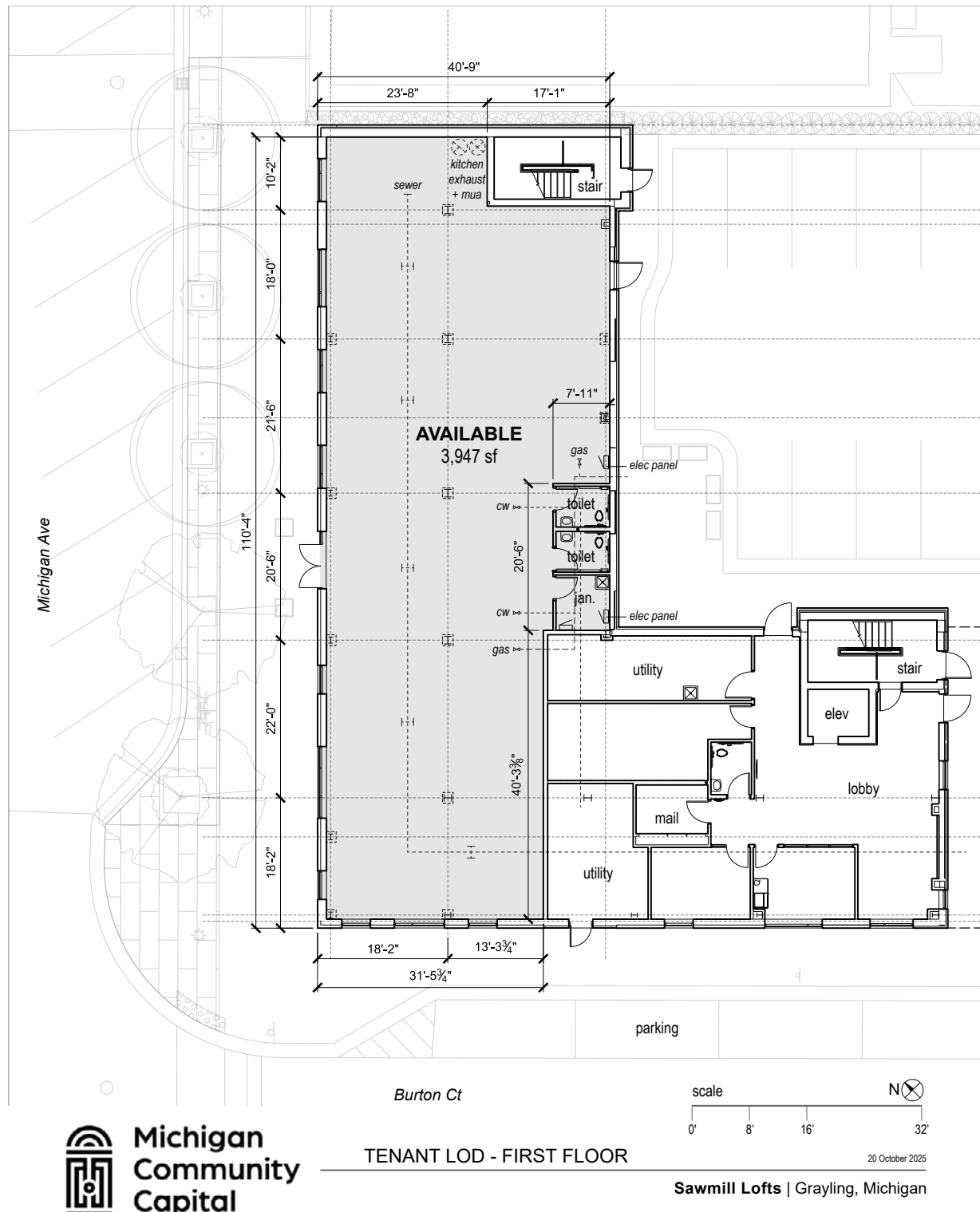
### Property Highlights

- Up to 3,947 SF white-box commercial space
- Located in Grayling's newest, tallest building
- 40 new apartments above; on-site customer flow
- NNN lease starting at \$3,500/month
- Build-to-suit options available
- Contemporary construction, efficient utilities
- Positioned as part of Grayling's newest multi-story development

For commercial leasing information please contact: Marilyn Chrumka, Vice President of Investments  
Michigan Community Capital | (517) 334-0967 | [marilyn@miccap.org](mailto:marilyn@miccap.org) | [www.sawmilllofts.com](http://www.sawmilllofts.com)

# Commercial Space in Grayling's Newest & Tallest Building

102 E Michigan Avenue, Grayling, Michigan 49738



For commercial leasing information please contact: Marilyn Chrumka, Vice President of Investments  
Michigan Community Capital | (517) 334-0967 | marilyn@miccap.org | www.sawmilllofts.com