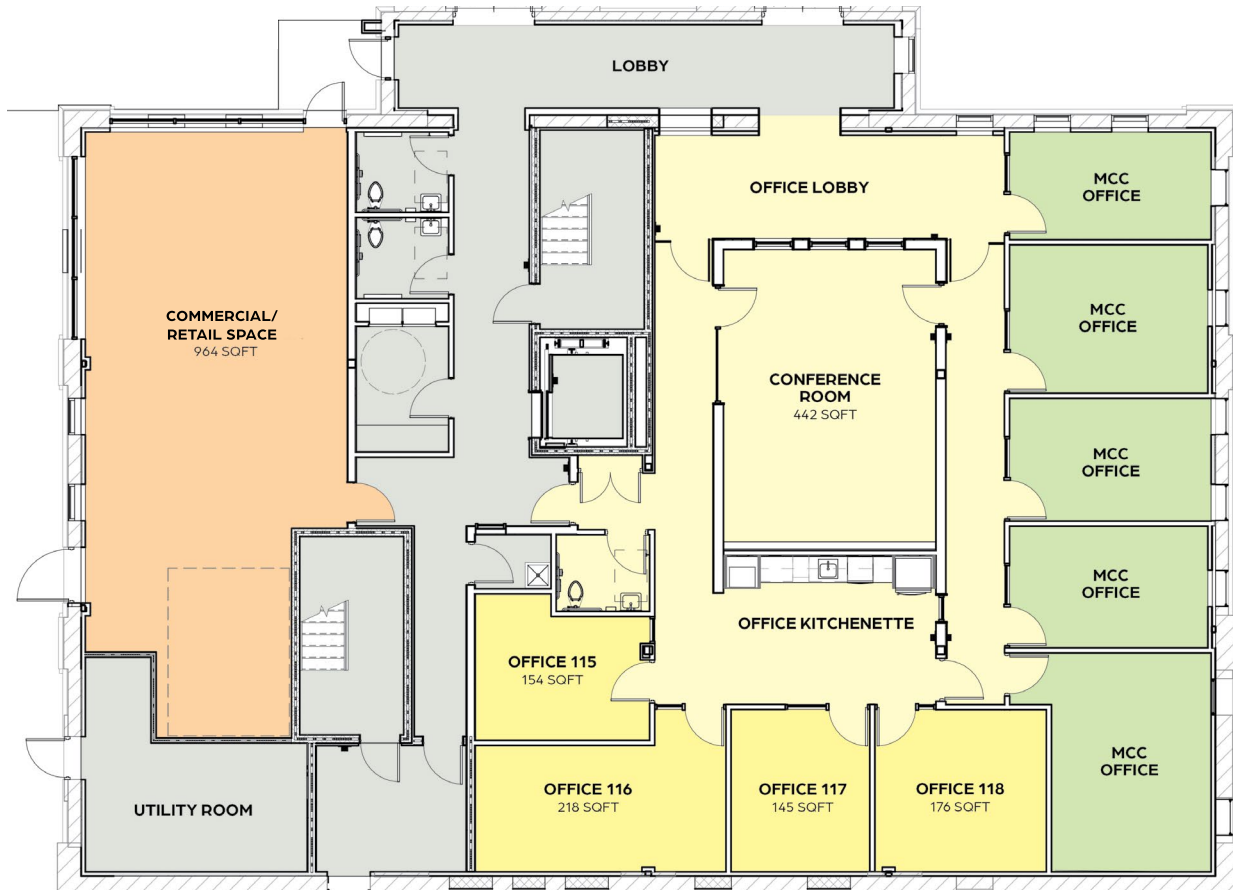


TEMPLE

COMMERCIAL OFFICES FOR LEASE

OFFICE SPACE AMENITIES

- Four Furnished Offices
- Office Space Restroom
- First-floor Commercial Space
- Cleaning & Utilities Included
- Permit Parking On-site
- Energy-efficient Materials
- Office Kitchenette
- Electronic Key-fob Entry 24-7
- Walkable Location
- Shared Conference Room
- Smoke-free Premises

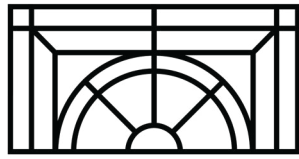


Office Suite 115	154 SQFT	\$705/month
Office Suite 116	218 SQFT	\$1,000/month
Office Suite 117	145 SQFT	\$665/month
Office Suite 118	176 SQFT	\$810/month

Multiple Offices Available at Discounted Rate

For office and commercial leasing information please contact: Marilyn Chrumka, Vice President of Investments
Michigan Community Capital | (517) 334-0967 | marilyn@miccap.org

www.templeoftslansing.com
502 E. Cesar E. Chavez Ave, Lansing, MI 48906



TEMPLE

COMMERCIAL OFFICES FOR LEASE



Built in 1917 as a church, this five-story brick building is an iconic property in Old Town Lansing. This project has completely transformed the building into a modern, energy-efficient, mixed-use property while still highlighting unique historic elements including exterior refurbished cornices and columns, and large arched windows.

Temple building is conveniently located in the heart of Old Town Lansing, an urban neighborhood with a creative small town feel. Permitted on-site parking, secure key-fob building entry, a smoke-free property and on-site leasing and maintenance staff are some of the amenities.



For office and commercial leasing information please contact: Marilyn Chrumka, Vice President of Investments
Michigan Community Capital | (517) 334-0967 | marilyn@miccap.org

www.templeoftslansing.com
502 E. Cesar E. Chavez Ave, Lansing, MI 48906